

DIRECT SUPPORT, GENERAL SUPPORT,
AND DEPOT MAINTENANCE REPAIR PARTS
AND SPECIAL TOOLS LIST

TELESCOPE, ELBOW M116A1D

(1240-759-7781), M116 (1240-898-6787),

M116C (1240-898-6789), AND

M116F (1240-974-6432)

TECHNICAL MANUAL }
 No. 9-1240-288-35P }

HEADQUARTERS,
 DEPARTMENT OF THE ARMY
 WASHINGTON, D.C. 24 September, 1970

**DIRECT SUPPORT, GENERAL SUPPORT, AND DEPOT MAINTENANCE
 REPAIR PARTS AND SPECIAL TOOLS LIST
 TELESCOPE, ELBOW M116A1D (1240-759-7781),
 M116 (1240-898-6787), M116C (1240-898-6789), AND
 M116F (1240-974-6432)**

This manual is current as of 24 September 1970

	Paragraph	Page
SECTION I. INTRODUCTION		
Scope	1	1
General	2	1
Explanation of columns	3	1
Special Information.....	4	2
How to locate repair parts	5	3
Abbreviations	6	3
Federal supply copies for manufacturers	7	3
Recommendations for maintenance publications	8	3
II. REPAIR PARTS FOR DIRECT SUPPORT, GENERAL SUPPORT, AND DEPOT MAINTENANCE	--	6
III. SPECIAL TOOLS, TEST AND SUPPORT EQUIPMENT FOR DIRECT SUPPORT, GENERAL SUPPORT, AND DEPOT MAINTENANCE.....	Not Applicable	
IV. INDEX-FEDERAL STOCK NUMBER AND REFERENCE NUMBER CROSS-REFERENCE TO FIGURE AND ITEM NUMBER	--	18

*This manual supersedes TM 9-1240-288-35P, 29 Mar 62, including all changes.

Section I. INTRODUCTION

1. Scope

This manual lists repair parts, special tools, and equipment required for the performance of direct support, general support, and depot maintenance of the Telescope, Elbow M116A1D, M116, M116E and M116F.

2. General

This Repair Parts and Special Tools List is divided into the following sections:

a. *Repair Parts-Section II.* A list of repair parts for the performance of maintenance at the direct support, general support, and depot level in figure and item number sequence.

b. *Special Tools, Test and Support Equipment-Section III.* A list of special tools, test and support equipment for the performance of maintenance at the direct support, general support, and depot level.

c. *Federal Stock Number and Reference Number Index-Section IV.* A list of Federal Stock Numbers in ascending numerical sequence followed by a list of reference numbers in ascending alpha-numeric sequence, cross-referenced to the illustration figure number and item number.

3. Explanation of Columns

The following provides an explanation of columns in the tabular lists in Sections II and III.

a. *Source Maintenance and Recoverability Recoverability Codes (SMR), Column 1:*

(1) Source code, indicates the selection status and source for the listed item. Source codes are:

Code	Explanation
P	Repair parts, special tools, and test equipment which are stocked in or supplied from the (GSA,/DSA, or Army supply system and authorized for use at indicated maintenance categories.
P2	Repair parts, special tools, and test equipment which are procured and stocked for insurance purposes because the combat or military essentiality of the end items dictates that a minimum quantity be available in the supply system.
P9	Assigned to items which are NSA design controlled; unique repair parts, special tools, test, measuring and diagnostic equipment, which are stocked and supplied by the Army Comsec logistic systems, and which are not subject to the provisions of AR 380-41.
P10	Assigned to items which are NSX design controlled; special tools, test measuring and diagnostic equipment for Comsec support, which are accountable under the provision of AR 380 41, which are stocked and supplied by the Army Comsec logistic system.

Code	Explanation
M	Repair parts, special tools and test equipment which are to be manufactured at indicated

	maintenance levels.												
A	Assemblies which are not procured or stocked as such, but are made up of two or more units. Such component units carry individual stock numbers and descriptions, are procured and stocked separately and can be assembled to form the required assembly at indicated maintenance categories.												
X	Parts and assemblies which are not procured or stocked and the mortality of which normally is below that of the applicable end item or component. The failure of such part or assembly Should result in retirement of the end item from the supply system.												
X	Repair parts which are not procured or stocked. The requirements for such items will be filled by use of the next higher assembly or component.												
X2	Repair parts, Special Tools and Test Equipment which have no foreseen mortality. The indicated maintenance category requiring such repair parts will attempt to obtain same through cannibalization and/or salvage. When such items are not obtainable through cannibalization or salvage, the item may be requisitioned with accompanying justification, through normal supply channels.												
G.	Major assemblies that are procured with PEMA funds for initial issue only as exchange assemblies at DSU and GSU level. These assemblies will not be stocked above DS and GS level or returned to Depot supply level.												
	(2) Maintenance code, indicates the lowest category of maintenance authorized to install the listed item. The maintenance level codes are:												
	<table border="0"> <thead> <tr> <th style="text-align: left;">Code</th> <th style="text-align: left;">Explanation</th> </tr> </thead> <tbody> <tr> <td>C</td> <td>Crew or operator maintenance</td> </tr> <tr> <td>O</td> <td>Organizational maintenance</td> </tr> <tr> <td>F</td> <td>Direct support maintenance</td> </tr> <tr> <td>H</td> <td>General support maintenance</td> </tr> <tr> <td>D</td> <td>Depot maintenance.</td> </tr> </tbody> </table>	Code	Explanation	C	Crew or operator maintenance	O	Organizational maintenance	F	Direct support maintenance	H	General support maintenance	D	Depot maintenance.
Code	Explanation												
C	Crew or operator maintenance												
O	Organizational maintenance												
F	Direct support maintenance												
H	General support maintenance												
D	Depot maintenance.												
	(3) <i>Recoverability Codes.</i> The following codes will be used when the responsible Army activity desires the return of unserviceable repair parts, special tools and test equipment:												
	<table border="0"> <thead> <tr> <th style="text-align: left;">Code</th> <th style="text-align: left;">Explanation</th> </tr> </thead> <tbody> <tr> <td>R</td> <td>Applies to repair parts (assemblies and components) special tools and test equipment which are considered economically repairable at direct and general support maintenance levels. When the item is no longer economically repairable it is normally disposed of at the GS Level. When supply considerations dictate, some of these repair parts may be listed for automatic return to supply for depot level repair as set forth in AR 710-50. When so listed, they will be replaced by supply on an exchange basis.</td> </tr> </tbody> </table>	Code	Explanation	R	Applies to repair parts (assemblies and components) special tools and test equipment which are considered economically repairable at direct and general support maintenance levels. When the item is no longer economically repairable it is normally disposed of at the GS Level. When supply considerations dictate, some of these repair parts may be listed for automatic return to supply for depot level repair as set forth in AR 710-50. When so listed, they will be replaced by supply on an exchange basis.								
Code	Explanation												
R	Applies to repair parts (assemblies and components) special tools and test equipment which are considered economically repairable at direct and general support maintenance levels. When the item is no longer economically repairable it is normally disposed of at the GS Level. When supply considerations dictate, some of these repair parts may be listed for automatic return to supply for depot level repair as set forth in AR 710-50. When so listed, they will be replaced by supply on an exchange basis.												

Code	Explanation
S	Repair parts, special tools, test equipment and assemblies which are economically repairable at DSU and GSU activities and which normally are furnished by supply on an exchange basis. When items are determined by a GSU to be uneconomically repairable, they will be evacuated to a depot for evaluation and analysis before final disposition.
T	High dollar value recoverable repair parts, special tools and test equipment which are subject to special handling and are issued on an exchange basis. Such items will be evacuated to the depot for overhaul or final disposition. This criteria is interpreted as including items like engines even though minor adjustments/repairs are authorized at below depot level. Communications-Electronics and Missile Support Items will be repaired/overhauled only at depots.
U	Repair parts, special tools and test equipment specifically selected for salvage by reclamation units because of precious metal content, critical materials, high dollar value or reusable casings or castings. <ul style="list-style-type: none"> b. <i>Federal Stock Number, Column 2.</i> This column indicates the Federal Stock Number assigned to the item and will be used for requisitioning purposes. c. <i>Description, Column 3.</i> This column indicates the Federal item name and any additional description of the item required. The abbreviation "w / e" when used as a part of the nomenclature, indicates the Federal stock number includes all armament, equipment, accessories, and repair parts issued with the item. A part number or other reference number is followed by the applicable five-digit Federal supply code for manufacturers in parentheses. d. <i>Unit of Measure (U/M), Column 4.</i> A 2 character alphabetic abbreviation indicating the amount or quantity of the item upon which the allowances are based e.g., ft, ea, pr, etc. e. <i>Quantity Incorporated in Unit, Column 5.</i> This column indicates the quantity of the item used in the assembly or the portion illustrated. A "V" appearing in this column in lieu of a (quantity indicates that a definite quantity cannot be indicated, (e.g., shims, spacers, gaskets, etc.). f. <i>30-Day DS GS Maintenance Allowances, Columns 6 and 7.</i>

NOTE: Allowances in GS column are for GS maintenance only.

(1) The allowance columns are divided into three subcolumns. Indicated in each subcolumn, opposite the first appearance of each item, is the total quantity of items authorized for the number of equipments supported. Subsequent appearances of the same item will have the letters "REF" in the applicable allowance columns. Items authorized for use as required but not for initial stockage are identified with an asterisk in the allowance column.

(2) The quantitative allowances for DS (CS, levels of maintenance will represent initial stockage for a 30-day period for the number of equipments supported.

(3) Determination of the total quantity of parts required for maintenance of more than 100 of these equipments can be accomplished by converting the equipment quantity to a decimal factor by placing a decimal point before the next to last digit of the number to indicate hundredths and multiplying the decimal factor by the parts quantity authorized in the 51 100 allowance column. Example: authorized allowance for 51100 equipments is 40; for 1.50 equipments multiply 40 by 1.50 or 60 parts required.

g. *1-Year Allowances Per 100 Equipments Contingency Planning Purposes, Column 8.* This column indicates opposite the first appearance of each item the total quantity required for distribution and contingency planning purposes. The range of items indicates total quantities of all authorized items required to provide for adequate support of 100 equipments for one year.

h. *Depot Maintenance Allowance Per 100 Equipments, Column 9.* This column indicates opposite the first appearance of each item, the total quantity authorized for depot maintenance of 100 equipments. Subsequent appearances of the same item will have the letters "REF" in the allowance column. Items authorized for use as required but not for initial stockage are identified with an asterisk in the allowance column.

i. *Illustration, Column 10.* This column is divided as follows:

(1) *Item number column 10a.* Indicates the figure number of the illustration in which the item is shown.

(2) *Figure number column 10b.* Indicates the callout number used to reference the item in the illustration.

4. Special Information

a. Action change codes indicated in the left hand margin of the listing page denote the following:

N - Indicates an added item not included in previous publications.

C - Indicates a change in data.

F - Indicates a change in FSN only.

- b. The following publications pertain to Telescope, Elbow
M116A1D:
TM 9-1015-203-20P Organizational Maintenance Repair Parts and Special Tools Lists for Howitzer, Light, Towed, 105MM M101 and M101A1
- M116
TM 9-2300-216-20: Organizational Maintenance Repair Parts, and Special Tool Lists for Howitzer, Heavy, Self-Propelled, 8-in. M110
- M116C
TM 9-2300-216-20P Organizational Maintenance Repair Parts, and Special Tools List for Gun, Field Artillery, Self-Propelled, 175MM M107
- M116F
TM 9-1030-203-20P Organizational Maintenance Repair Parts and Special Tools List for Howitzer, Heavy, Towed, 8-in. M115

c. To maintain disassembly sequence in this manual, a sequence number in parentheses will be displayed immediately to the right of the callout number on the illustration.

d. Identifications of the usable on codes included in column 3 of this publication are:

Code	Used On
A	M116A1D
B	M116
C	M116C
D	M116F

5. How to Locate Repair Parts

a. When Federal Stock Number or reference number is unknown:

(1) *First.* Find the illustration covering the assembly group to which the repair part belongs.

(2) *Second.* Identify the repair part on the illustration and note the illustration figure and item number of the repair part.

(3) *Third.* Using the Repair Parts Listing, find the assembly group to which the repair part belongs and locate the illustration figure and item number noted on the illustration.

b. When Federal Stock number or reference number is known:

(1) *First.* Using the Index of Federal Stock Numbers and Reference Numbers find the pertinent Federal Stock number or reference number. This index is in ascending FSN sequence followed by a list of reference numbers in ascending alpha-numeric sequence, cross-referenced to the illustration figure number and item number.

6. Abbreviations

Abbreviations	Explanation
al.....	aluminum

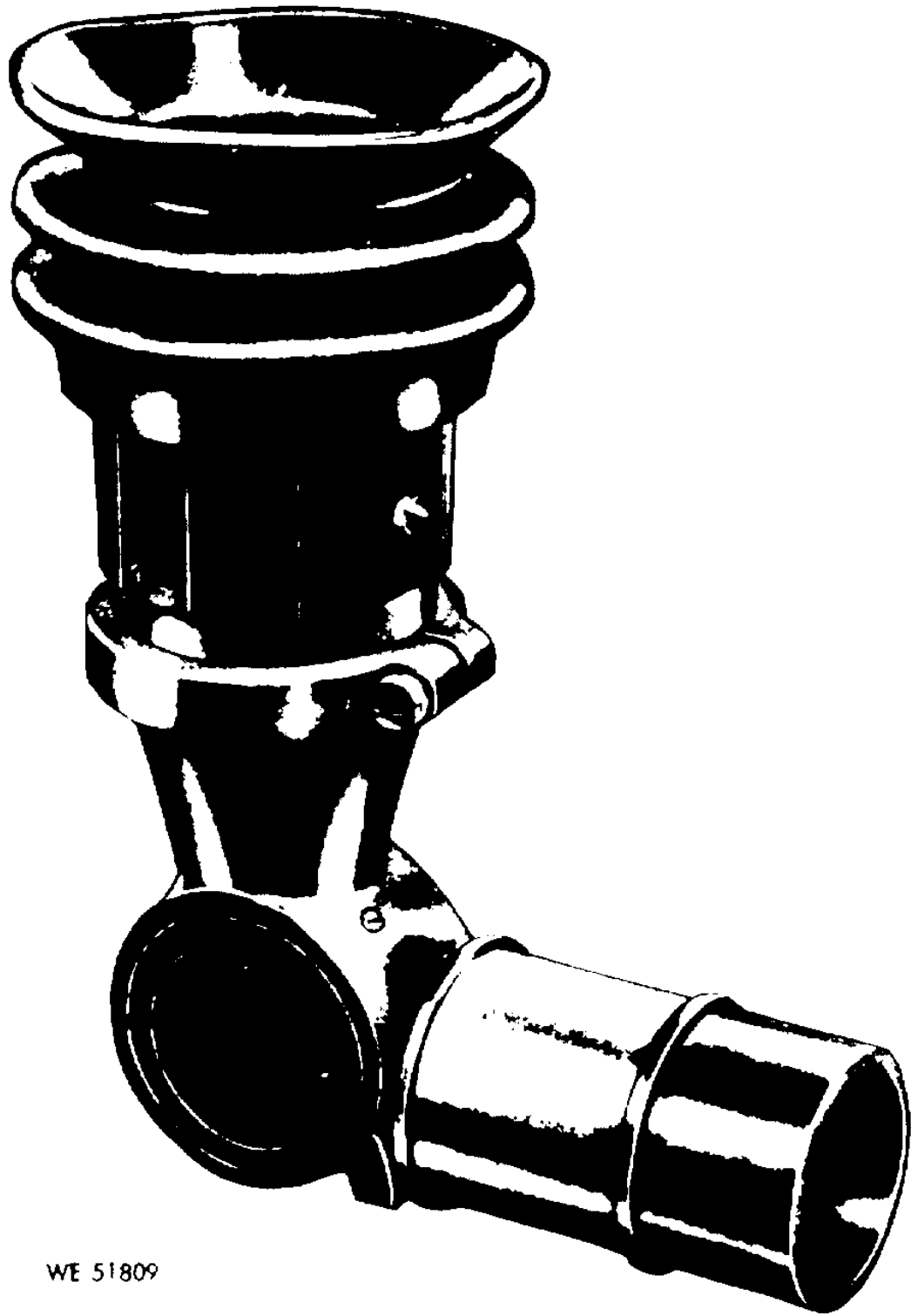
brs.....	brass
ck.....	cork
cres.....	corrosion resistant steel
dia.....	diameter
ext.....	external
filh.....	filister head
fnsh.....	finish
fp.....	flat point
gl.....	glass
h.....	high
hdls.....	headless
hex soc.....	hexagon socket
hlcl.....	helical id
id.....	inside diameter
Intl.....	internal
l.....	long
ms.....	Military Standard
nf.....	National fine (thread)
no.....	number
ns.....	National special (thread)
oa.....	overall
od.....	outside diameter
pnh.....	panhead
psvt.....	passivate
rbr.....	rubber
rec.....	recess
spr.....	spring
stl.....	steel
thd.....	thread
thk.....	thick
unc.....	unified course thread
unf.....	unified fine thread
uns.....	unified special thread
w.....	wide

7. Federal Supply Codes for Manufacturers

Code	Manufacturer
00000	Ordnance Corps
10001	Naval Ordnance Systems Command Washington, D.C. 20360
19200	Frankford Arsenal, Philadelphia, Pa.
21450	Ordnance Corps Engineering Standards, Rock Island Arsenal, Rock Island, Il.
96906	Military Standard Promulgated by Standardization Division, Directorate of Logistic Services DSA
97539	APM & Hex Seal Corp., 41 Horneck St. Englewood, N.J. 07631

8. Recommendations for Maintenance Publication Improvements

Report of errors, omissions, and recommendations for improving this publication by the individual user is encouraged. Reports should be submitted on DA Form 2028 (Recommended Changes to DA Publications) and forwarded directly to The Commanding Officer, Frankford Arsenal, ATTN: AMSWE-SMF-W3100, Philadelphia, Pa. 19137.

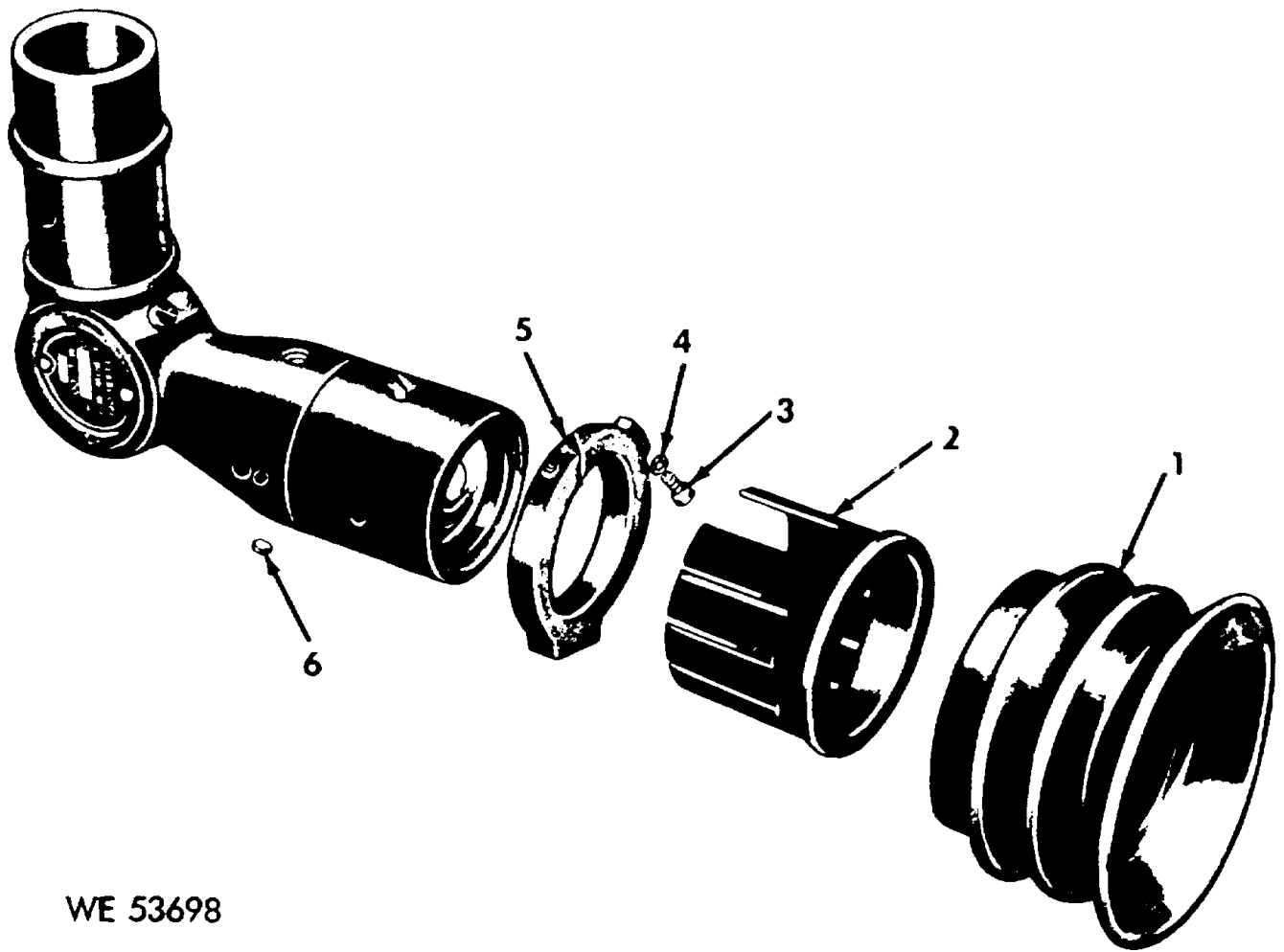


WE 51809

Figure 1. Elbow telescope M116A1D, M116, M116C, and M116F.

Section II. REPAIR PARTS LIST

Act Illustration on Code	(1) <i>SMR Code</i>	(2) <i>Federal Stock No.</i>	(3) Description <i>Reference Number & Mfr Code Usable on Code</i>	(4) Unit of Meas	(5) Inc in Unit	(6) 30-Day DS Maint			(7) 30-Day GS Maint			(8) alw Per 100 equip cntgcy	(9) Depot Maint Alw Per 100 Equip	(10) 1-Yr	
						allowance			allowance					(a) Fig. No.	(b) Item No.
						(a)	(b)	(c)	(a)	(b)	(c)				
C	P-O-	1240-913-5751	TELESCOPE ELBOW, 7597781, M116 8587431, M116C 8587491, M116F 8289165	EA	1	1	1	2	1	1	2	24	25	2	1
C	P-F-	1240-613-5750	EYESHIELD, OPTICAL INSTRUMENT RBR, 1 13/16 L OA 6135751 (19200)	EA	1	*	1	1	*	1	1	12	5	2	2
N	P-F-	5305-050-9231	ADAPTER BRS, 1.94 OD, 1 19 6135750 (19200)	EA	1	*	1	2	*	1	2	24	10	2	3
N	P-F-	5310-933-8120	SCREW, MACHINE PHN, CROSS REC, CRES, PSVT FNSH NO 10 24UNC-2A, 3/4 L MS51957-65 (96906)	EA	1	*	1	2	*	1	2	24	10	2	4
C	P-F-	124-0-763-7795	WASHER, LOCK SPR, HLCL, CRES, PSVT FNSH, NO 10 MS35338-138 (96906)	EA	1	1	2	3	1	2	3	36	25	2	5
C	P-H-	1240-503-5616	ADAPTER BRS, 2 1/16 OD, 3/8L 7637795 (19200)	EA	2	--	--	-	1	1	2	24	15	2	6
			WINDOW, OBSERVATION GL, 0.1800 DA DIA, 0.042 DA THK 5035616 (19200)												



WE 53698

Figure 2. Elbow telescope M116A1D, M116C, and M116F--partial exploded view.

Section II. REPAIR PARTS LIST

Act Illustration on Code	(1) <i>SMR Code</i>	(2) <i>Federal Stock No.</i>	(3) Description <i>Reference Number & Mfr Code</i> <i>Usable on Code</i>	(4) Unit of Meas	(5) Inc in Unit	(6) Qty 30-Day DS Maint			(7) 30-Day GS Maint			(8) alw Per 100 equip cntgcy	(9) Depot Maint Alw Per 100 Equip	(10) 1-Yr	
						allowance			allowance					(a) Fig. No.	(b) Item No.
						(a) 1-20	(b) 21-50	(c) 51-100	(a) 1-20	(b) 21-50	(c) 51-100				
			ELBOW TELESCOPE M116A1D, M116, M116C AND M116F												
C	P-O-	5305-857-5190	SCREW, MACHINE S /8-32x1/8 (97539)	EA	1	1	1	2	1	1	2	24	20	3	1
C	P-O-	5305-085-370	SCREW. MACHINE S/ 4-40 3/16 (97539)	EA	1	1	1	2	1	1	2	24	20	3	2
C	P-H	5305-282-7644	SETSCREW 50:3880 (21450)	EA	2	--	--	--	*	1	2	24	10	3	3
N	A		OBJECTIVE ASSEMBLY 6139343 (19200)		1	--	--	--	--	--	--	--	--	3	4
N	P-H-	5305-068-1654	SETSCREW HEX SKT, FP, CRES, PSVT FNSH, NO 2 64UNF-3A, , 8 L MS51031-8 (96906)	EA	1	--	--	--	*	1	2	24	10	3	6
C	P-H-	5305-282-7654	SETSCREW HEX SOC, FP, CRFS, PSVT FNSH, NO 8 36NF 2A, 5/32L 540889 (00000)	EA	4	--	--	--	1	2	4	48	40	3	7
C	X-		SETSCREW HDLS, FP, CRES, PSVT FNSH, NO 10 32NF-2A, 1/ 8 L 503878 (00000)		1	--	--	--	--	--	--	--	--	3	8
N	A-		EYEPIECE ASSEMBLY 6139342 (19200)		1	--	--	--	--	--	--	--	--	3	9

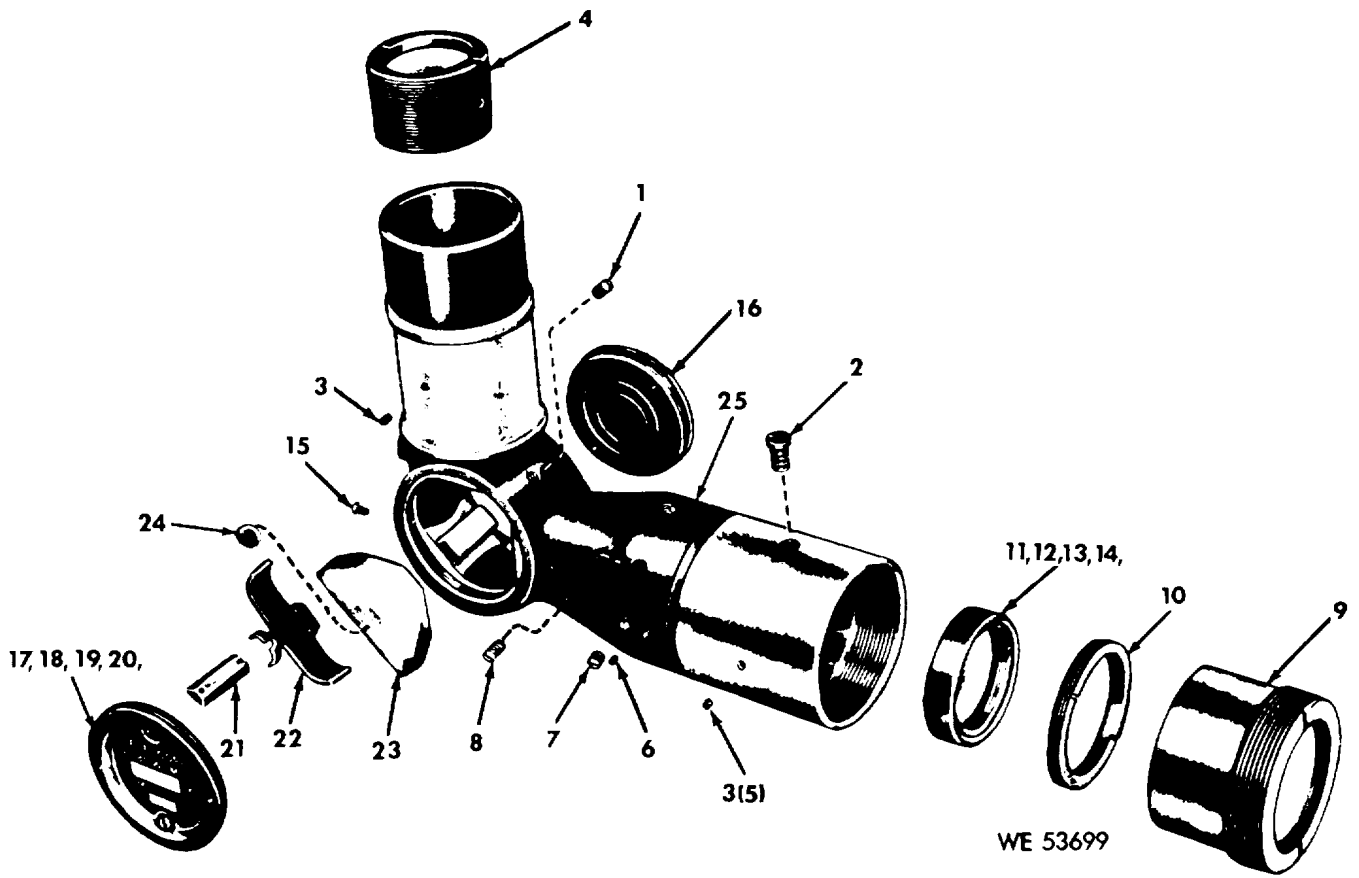


Figure 3. Elbow telescope M116A1D, M116, M116C, and M116F-partial exploded view.

Section II. REPAIR PARTS LIST

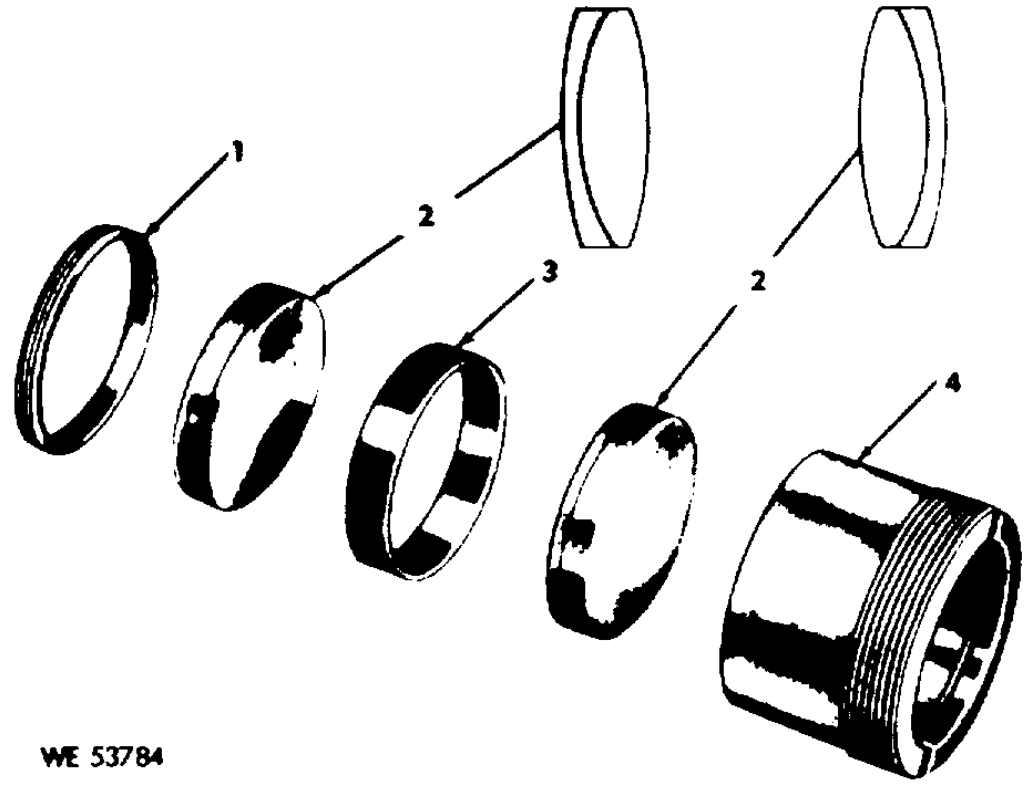
Act Illustration on Code	(1) <i>SMR Code</i>	(2) <i>Federal Stock No.</i>	(3) Description <i>Reference Number & Mfr Code</i> <i>Usable on Code</i>	(4) Unit of Meas	(5) Inc in Unit	(6) Qty 30-Day DS			(7) 30-Day DS Maint			(8) 30-Day GS Maint alw Per 100 equip cntgcy	(9) Depot Maint Alw Per 100 Equip	(10) 1-Yr	
						allowance			allowance					(a) Fig. No.	(b) Item No.
						(a) 1-20	(b) 21-50	(c) 51-100	(a) 1-20	(b) 21-50	(c) 51-100				
C	P-H-	5340-285-7927	RING, EXTERNALLY THREADED BRS, 1.375-32NS-2A OD, 0.15 L DA 5045968 (00000)	EA	1	--	--	--	*	1	1	12	4	3	10
N	A-		RETICLE ASSEMBLY 7641312 (00000)	A	1	--	--	--	--	--	--	--	--	3	11
N	A-		RETICLE ASSEMBLY 8587499 (19200)	B	1	--	--	--	--	--	--	--	--	3	12
N	A-		RETICLE ASSEMBLY 8587503 (19200)	C	1	--	--	--	--	--	--	--	--	3	12
N	A-		RETICLE ASSEMBLY 8289168 (19200)	D	1	--	--	--	--	--	--	--	--	3	14
N	P-H-	5305-253-2838	SCREW, MACHINE AN510C1R3 (88044)	EA		--	--	--	1	1	2	24	20	3	15
C	P-H-	1240-759-6333	COVER BRS, 1.49 OD 7596333 (19200)	EA	1	--	--	--	*	1	1	12	5	3	16
N	P-H-	1240-401-9576	COVER (RIVETED) 7640259 (19200)	A	1	--	--	--	*	1	1	12	5	3	17
N	P-H-	1240-401-9577	COVER 8587498 (19200)	B	1	--	--	--	*	1	1	12	5	3	18

Section II. REPAIR PARTS LIST

Act Illustration on Code	(1) <i>SMR Code</i>	(2) <i>Federal Stock No.</i>	(3) Description <i>Reference Number & Mfr Code</i> <i>Usable on Code</i>	(4) Unit of Meas	(5) Inc in Unit	(6) Qty 30-Day DS Maint			(7) 30-Day GS Maint			(8) alw Per 100 equip cntgcy	(9) Depot Maint Alw Per 100 Equip	(10) 1-Yr	
						allowance			allowance					(a) Fig. No.	(b) Item No.
						(a) 1-20	(b) 21-50	(c) 51-100	(a) 1-20	(b) 21-50	(c) 51-100				
N	P-H-	1240-401-9578	COVER 8587502 (19200) C	EA	1	--	--	--	*	1	1	12	5	3	19
N	P-H-	1240-401-9579	COVER 8289169 (19200)	EA	1	--	--	--	*	1	1	12	5	3	20
N	P-H-	5340-503-7821	CLIP, SPRING TENSION BRS, 0.27 W, 0.070 L, 0.091 THK 5037821 (00000)	EA	1	--	--	--	*	1	1	12	5	3	21
C	P-H-	1240-503-7820	HOLDER, OPTICAL ELEMENT STL 5037820 (19200)	EA	1	--	--	--	*	1	1	12	6	3	22
C	P-H-	1240-503-6234	PRISM, OPTICAL INSTRUMENT 5036234 (19200)	EA	1	--	--	--	1	1	2	24	16	3	23
C	P-H-	1240-503-2820	PAD, CUSHIONING CK, 1/4 DIA 5032820 (19200)	EA	2	--	--	--	1	1	2	24	24	3	24
N	X-		BODY 7690840 (19200)		1	--	--	--	--	--	--	--	--	3	25

Section II. REPAIR PARTS LIST

Act Illustration on Code	(1)	(2)	(3)	(4)	(5)	(6)			(7)			(8)	(9)	(10)	
	SMR Code	Federal Stock No.	Description Reference Number & Mfr Code <i>Usable on Code</i>	Unit of Meas	Inc in Unit	Qty 30-Day DS Maint			30-Day GS Maint			alw Per 100 equip cntgcy	Depot Maint Alw Per 100 Equip	1-Yr	
						allowance			allowance					(a)	(b)
						(a)	(b)	(c)	(a)	(b)	(c)			(a)	(b)
						1-20	21-50	51-100	1-20	21-50	51-100			Fig. No.	Item No.
			EYEPIECE ASSEMBLY 6136409												
C	P-H-	5340-285-7901	RING, EXTERNALLY THREADED BRS, 1.375-32NS-2A OD, 0.18 L OA 5045959 (00000)	EA	1	--	--	--	*	1	1	12	5	4	1
C	P-H-	1240-504-5960	LENS, OPTICAL INSTRUMENT 1.341 DIA 5045960 (19200)	EA	2	--	--	--	*	1	1	12	5	4	2
C	P-H-	1240-504-5961	SPACER, OPTICAL ELEMENT AL, 1.2500 ID, 1.3410 OD, 0.2900 L DA 5045961 (19200)	EA	1	--	--	--	*	1	1	12	5	4	3
C	P-H-	1240-613-6408	CELL, OPTICAL ELEMENT BRS, INTL AND EXT THD, 1 3/8-32UNS- 2B ID, 1 9/16-24UNS-2A OD, 1.06 H OA 6136408 (19200)	EA	1	--	--	--	*	1	1	12	5	4	4

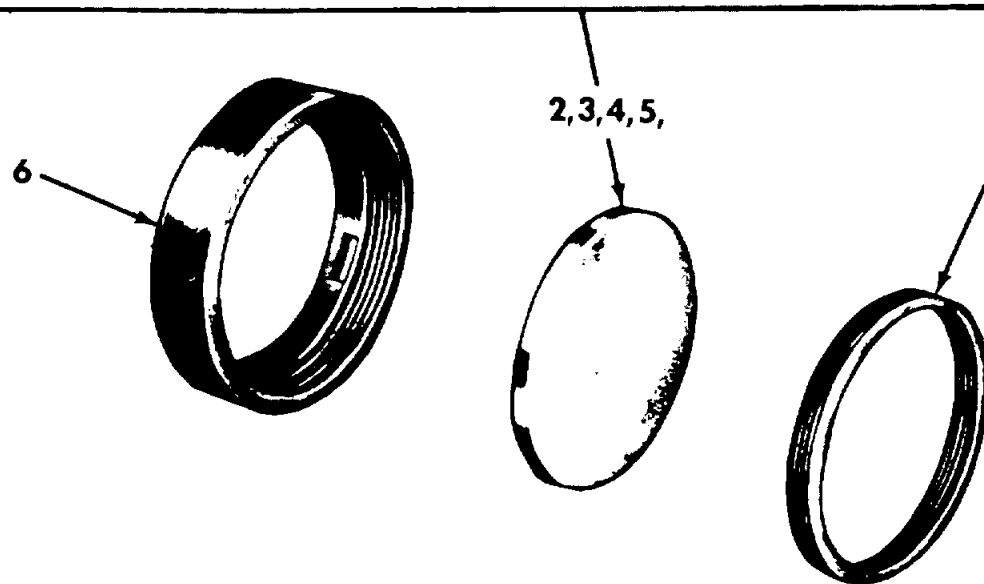
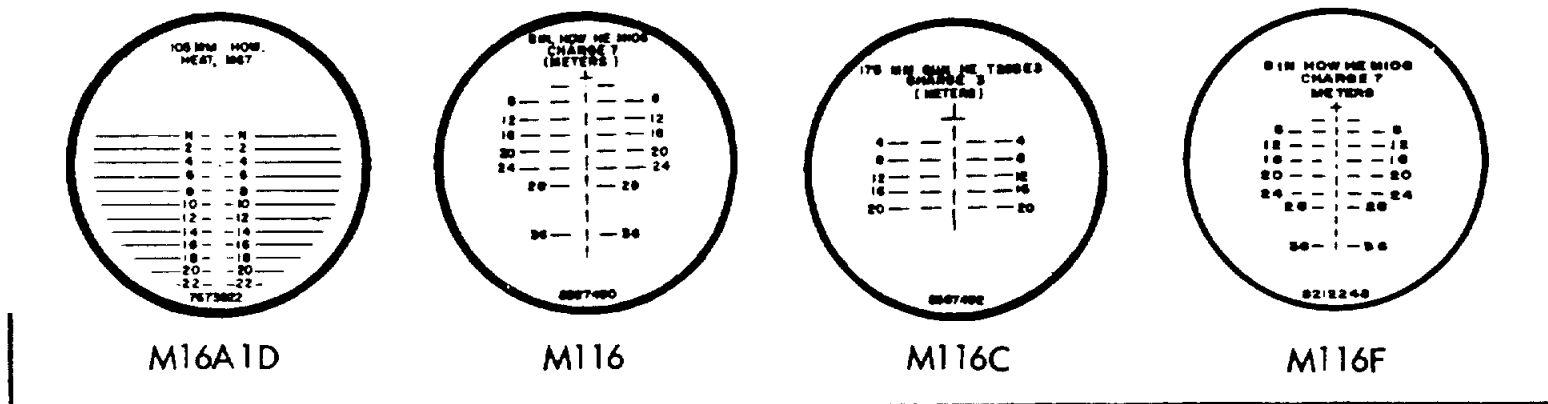


WE 53784

Figure 4. Eyepiece assembly (6156409)-exploded view.

Section II. REPAIR PARTS LIST

Act Illustration on Code	(1) <i>SMR Code</i>	(2) <i>Federal Stock No.</i>	(3) Description <i>Reference Number & Mfr Code</i> <i>Usable on Code</i>	(4) Unit of Meas	(5) Inc in Unit	(6) Qty 30-Day DS Maint			(7) 30-Day GS Maint			(8) alw Per 100 equip cntgcy	(9) Depot Maint Alw Per 100 Equip	(10) 1-Yr	
						allowance			allowance					(a) Fig. No.	(b) Item No.
						(a) 1-20	(b) 21-50	(c) 51-100	(a) 1-20	(b) 21-50	(c) 51-100				
			RETICLE ASSEMBLY, M116A1D, (7673922), M116 (8587490) M116C (8587492) AND M116F (8212248)												
C	P-H-	5340-292-3620	RING, EXTERNALLY THREADED BRS, 1.1-48NS-2A OD, 0.125 L OA 5045966 (00000)	EA	1	--	--	--	*	1	1	12	5	5	1
C	P-H-	1240-767-3922	RETICLE, OPTICAL INSTRUMENT 7673922 (19200)	EA A	1	--	--	--	*	1	1	12	5	5	2
C	P-H-	1240-898-6790	RETICLE, OPTICAL INSTRUMENT 8587490 (19200)	EA B	1	--	--	--	*	1	1	12	5	5	3
C	P-H-	1240-898-6788	RETICLE, OPTICAL INSTRUMENT 8587492 (19200)	EA C	1	--	--	--	*	1	1	12	5	5	4
N	P-H-	1240-774-7078	RETICLE, OPTICAL INSTRUMENT 8212248 (19200)	EA D	1	--	--	--	*	1	1	12	5	5	5
C	P-H-	1240-757-9883	CELL, OPTICAL ELEMENT BRS, INTL THD, 1.1-48UNS-2B ID, 0.29 OA 7579883 (19200)	EA	1	--	--	--	*	1	1	12	5	5	6

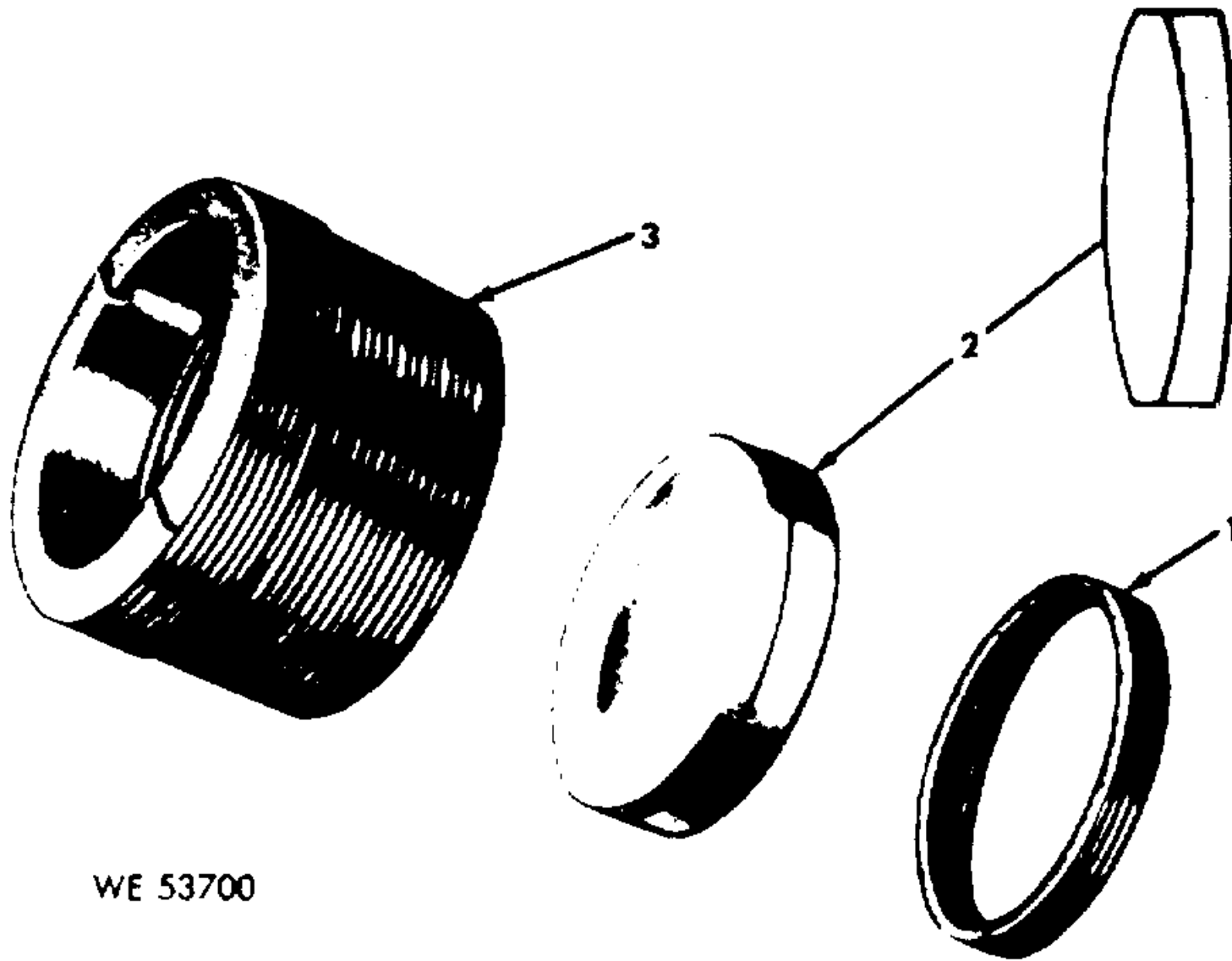


WE 53701

Figure 5. Reticle Assembly M116 A1D (7673922), M116 (8587490), M116C (8587492), and M116F (8212248)-exploded view.

Section II. REPAIR PARTS LIST

Act Illustration on Code	(1)	(2)	(3)	(4)	(5)	(6)			(7)			(8)	(9)	(10)	
	SMR Code	Federal Stock No.	Description Reference Number & Mfr Code <i>Usable on Code</i>	Unit of Meas	Inc in Unit	Qty 30-Day DS Maint			30-Day GS Maint			alw Per 100 equip cntgcy	Depot Maint Alw Per 100 Equip	1-Yr	
						allowance			allowance					(a)	(b)
						(a)	(b)	(c)	(a)	(b)	(c)			(a)	(b)
						1-20	21-50	51-100	1-20	21-50	51-100			Fig. No.	Item No.
			OBJECTIVE ASSEMBLY (6136408)												
C	P-H-	5340-597-8890	RING, EXTERNALLY THREADED BRS, 1.1-48NS-2A OD, 0.15 L OA 5045965 (19200)	EA	1	--	--	--	*	1	1	12	5	6	1
C	P-H-	1240-504-5963	OBJECTIVE 5045963 (19200)	EA	1	--	--	--	*	1	1	12	5	6	2
C	P-H-	1240-613-6409	CELL, OPTICAL ELEMENT BRS, INTL AND EXT THD, 1.03 48NS-2 ID, 1.74 32NS-2 OD, 0.75 L OA 6136409 (19200)	EA	1	--	--	--	*	1	1	12	5	6	3



WE 53700

Figure 6. Objective assembly (6136408)--exploded view.

Section IV. INDEX-FEDERAL STOCK' NUMBER AND REFERENCE NUMBER CROSS-REFERENCED TO FIGURE AND ITEM NUMBER

Stock Number	Figure No.	Item No.	Stock Number	Figure No.	Item No.
1240-401-9576	3	17	1240-763-7795	2	6
1240-101-9577	3	18	1240-767-3922	5	2
1240-401-9578	3	19	1240-774-7078	5	5
1240-401-9579	3	20	1240-898-6788	5	4
1240-503-2820	3	24	1240-898-6790	5	3
1240-503-5616	2	6	5305-050-9231	2	3
1240-503-6234	3	23	5305-068-1654	3	6
1240-503-7820	3	22	5305-085-3706	3	2
1240-504-5960	4	2	5305-282-7644	3	3
1240-504-5961	4	3	5305-282-7654	3	7
1240-504-5963	6	2	5305-857-5190	3	1
1240-613-5750	2	2	5310-933-8120	2	4
1240-613-5751	2	1	5340-285-7901	4	1
1240-613-6408	4	4	5340-285-7927	3	10
1240-613-6409	6	3	5340-292-3620	6	1
1240-757-9883	5	6	5340-503-7821	3	21
1240-759-6333	3	16	5340-597-8890	6	1

<i>Reference No.</i>	<i>Mfr Code</i>	<i>Figure No.</i>	<i>Item No.</i>	<i>Reference No.</i>	<i>Mfr Code</i>	<i>Figure No.</i>	<i>item No.</i>
MS35338-138	96906	2	4	6135751	19200	2	1
MS51031-8	96906	3	6	6136408	19200	4	4
MS51957-65	96906	2	3	6136409	19200	6	3
S/4-40x3/16	97539	3	2	6139342	19200	3	9
S/8-32x1,8	97539	3	1	6139343	19200	3	4
10540473	19200	3	15	7579883	19200	5	6
5032820	19200	3	24	7596333	19200	3	16
5035616	19200	2	6	7637795	19200	2	5
5036234	19200	3	23	7640259	19200	3	17
5037820	19200	3	22	7641312	00000	3	11
5037821	00000	3	21	7673922	19200	5	2
503878	00000	3	8	7690840	19200	3	25
503880	21450	3	3	8212248	19200	5	5
5045959	00000	4	1	8289168	19200	3	14
5045960	19200	4	2	8289169	19200	3	20
5045961	19200	4	3	8587490	19200	5	3
504596	19200	6	2	8587492	19200	5	4
5045965	19200	6	1	8587498	19200	3	18
5045966	00000	5	1	8587499	19200	3	12
5045968	00000	3	10	8587502	19200	3	19
540889	00000	3	7	8587503	19200	3	13
6135750	19200	2	2				

By Order of the Secretary of the Army:

Official:


KENNETH G. WICKHAM,
*Major General, United States Army,
The Adjutant General.*

W. C. WESTMORELAND,
*General, United States Army,
Chief of Staff.*

DISTRIBUTION:

To be distributed in accordance with DA Form 12-41 (qty rqr block no. 142) Direct and General Support Maintenance requirements for Telescope, Elbow.

RECOMMENDED CHANGES TO EQUIPMENT TECHNICAL PUBLICATIONS



THEN... JOT DOWN THE DOPE ABOUT IT ON THIS FORM. CAREFULLY TEAR IT OUT, FOLD IT AND DROP IT IN THE MAIL!

SOMETHING WRONG WITH THIS PUBLICATION?

FROM: (PRINT YOUR UNIT'S COMPLETE ADDRESS)

DATE SENT

PUBLICATION NUMBER

PUBLICATION DATE

PUBLICATION TITLE

BE EXACT... PIN-POINT WHERE IT IS				IN THIS SPACE TELL WHAT IS WRONG AND WHAT SHOULD BE DONE ABOUT IT:
PAGE NO.	PARA-GRAPH	FIGURE NO.	TABLE NO.	

PRINTED NAME, GRADE OR TITLE, AND TELEPHONE NUMBER

SIGN HERE

TEAR ALONG PERFORATED LINE

DA FORM 2028-2
1 JUL 79

PREVIOUS EDITIONS ARE OBSOLETE.

P.S.—IF YOUR OUTFIT WANTS TO KNOW ABOUT YOUR RECOMMENDATION MAKE A CARBON COPY OF THIS AND GIVE IT TO YOUR HEADQUARTERS.

PIN: 026606-000